



Minnehaha United Methodist Church

A Reconciling Congregation
We Seek. We Serve. We Celebrate.

May 10, 2026 9:30 a.m.

* Please rise in body or spirit

Welcome Friends!

We welcome you to worship wherever you may be in your faith's journey. We strive to live in the way of Jesus Christ, sharing God's love on a daily basis regardless of race, sexual orientation or faith history.

We livestream our worship services, and you may end up in view of the camera at any point in the service.

Worship Personnel

Rev. Becky Sechrist, *Pastor*;
Rev. Jean Elliott, *Director of Children, Youth, & Their Families*;
Anders Nelson, *Organist*;
Tim Siefkes, *Band Leader*;
Cindy Bergstrom, *Choir Director*;
Nicholas Sabah & John Davis, *Communion Stewards*

Minnehaha United Methodist Church acknowledges that we gather on the traditional, ancestral, and contemporary land of Dakota People.

Attendance

We are delighted you are here! We invite you to "sign the welcome pad" electronically.

If you point your camera phone at the QR code, it will take you to a Google form where you can enter your information.



Offering

For our offering, you can also give electronically through the PayPal account online, or by using this QR Code (which takes you to our PayPal account).



Lyrics and music reprinted under CCLI #3175826/OneLicense.net #A-711192. All rights reserved. Permission to podcast/stream the music in this service obtained from: ONE LICENSE, License #A-711192; CCLI License #3175826; CCS License #11563. All rights reserved.

Children in Worship

We always welcome children in worship! We assume that they may make noise, wiggle, and even run around. If you would like childcare during worship, we do have care for children ages 0-4 upstairs in the 2nd floor nursery. The worship service is live-streamed into the nursery. In addition, we have activity bags for children at the back of the sanctuary. Rocking chairs are also available for nursing or rocking at the back of the sanctuary and in the nursery.

Prelude

The 23rd Psalm (dedicated to my mother)

Kristine Danzinger, *piano*

© 1990 Bobby McFerrin, Pronoblem Music (BMI)

David Hougen, Peter Johnson, Annie Payseur, Jane Moren, *quartet*

Welcome

*Call to Worship

(adapted from Bread for the Journey ed. Ruth C. Duck)

Leader: Springtime changes are bursting forth around us.

People: **The earth awakens from winter with a display of wondrous color.**

Leader: The cycle of living and dying continues.

People: **As it has for ages past and will for ages to come.**

Leader: Lent has passed and the celebration of Easter Sunday is over.

People: **But the message of new life, new awakenings, and new possibilities remain with us. Glory to God!**

*Opening Hymn *All Creatures of Our God and King* #62 vv. 1-4

The United Methodist Hymnal (red)

Francis of Assisi, Ralph Vaughan Williams;

Adapt. © 1989 The United Methodist Publishing House

Children's Message

Rev. Jean Elliott

Bibles for 2nd graders

Finley Gothgi, Ollis Gothgi, Francis Payseur, Leif Sandager

Congregational Blessing: We rejoice in this step in your journey with God. We pray God will guide you, your family, and us as you use this Holy Bible in your home, your church school classes, and in our worship. We will learn together and grow in our love for God's Word.

Sharing the Peace of Christ

Sharing of Joys and Concerns

Morning Prayer

(adapted from The United Methodist Book of Worship, 1992)

We pray for our mothers, who have given us life and love, that we may show them reverence and love

We pray for mothers who have lost a child through death, that their faith may give them hope, and their family and friends support and console them

We pray for mothers whose children are missing, that they may be found and returned home . . .

We pray for all of those individuals who have nurtured and cared for us

We pray for mothers, who have been unable to be a source of strength, who have not responded to their children and have not sustained their families

And now, O God, we gather all of our prayers this day together in the name of Jesus the Christ, who taught us to pray

The Lord's Prayer

inclusive

**Our Creator, God in heaven,
hallowed be thy name.
Thy kin-dom^{*} come, thy will be done,
on earth as it is in heaven.
Give us this day our daily bread.
And forgive us our trespasses as we forgive
those who trespass against us.
Lead us not into temptation,
but deliver us from evil.
For thine is the kin-dom and the power
and the glory forever. *Amen.***

^{*}*Kin-dom represents a hope for God's realm where we are all in community with one another.*

Choral Anthem

Chancel Choir

Hymn of Creation

©2014 Dan Forrest

*I sing the mighty power of God, that made the mountains rise,
That spread the flowing seas abroad, and built the lofty skies.
I sing the Wisdom that ordained the sun to rule the day.
The moon shines full at God's command, and all the stars obey.*

*I sing the goodness of the Lord that filled the earth with food.
God formed the creatures with a word, and then pronounced them good.
Lord, how Thy wonders Are displayed where'er I turn my eye.
If I survey the ground I tread, or gaze upon the sky.*

*There's not a plant or flower below, but makes Thy glories known,
and clouds arise, and tempests blow, by order from Thy throne.
While all that borrows Life from Thee is ever in Thy care,
and everywhere that we can be, Thou, God art present there.
- Isaac Watts*

Scripture Lesson

Acts 17:22-31

David Hougen

Hymn

The United Methodist Hymnal (red)

All Things Bright & Beautiful #147

Cecil Frances Alexander (1848) Martin Shaw (1915)

Sermon

"Olympic National Park: It Is A Gift"

Rev. Becky Sechrist

Offering of Gifts and Tithes

Offertory

Clara Sandager, *ukulele*

Simple Gifts

Joseph Brackett (1797 -1882)

***Act of Praise**

The United Methodist Hymnal (red)

Doxology #94

Thomas Ken (1674) Ralph Vaughan Williams (1909)
Adapt. © 1989 The United Methodist Publishing House.

*Prayer of Dedication

Eternal God, beyond the limitations of silver and gold, we bring to your altar what is valuable to us, that you may bless and multiply our efforts to make a faithful response. Thank you for all your gifts. Amen.

Announcements

*Closing Hymn

The United Methodist Hymnal (red)

God, Who Stretched the Spangled Heavens #150

Catherine Cameron, William Moore © 1967 Hope Publishing Co.

Benediction

Postlude

Angel Eyes

©2021 Jim Brickman; Universal Tunes, Wave Dancer (SESAC)

Our spring and summer sermon series features various **National Parks** around the United States. And, I'd love your contributions! If you have been to one of these parks and would be willing to share pictures and/or a brief story during the Children's Message on one of your favorite things about this park, please contact Becky. Thank you!

- Arches National Park (Utah) – July 12
- Badlands National Park (South Dakota) – July 19
- Big Bend National Park (Texas) – June 21
- Denali National Park (Alaska) – July 26
- Grand Canyon National Park (Arizona) – Sept. 6
- Great Smoky National Park (North Carolina/Tennessee) – June 28
- Indiana Sand Dunes National Park (Indiana) – Aug. 30
- Isle Royale National Park (Michigan) – June 28
- Kenai Fjords National Park (Alaska) – Aug. 2
- Lassen Volcanic National Park (California) – Aug. 9
- Mammoth Cave National Park (Kentucky) – Aug. 23
- Mt. Rainier National Park (Washington) – May 31
- Voyageurs National Park (Minnesota) – July 5
- Wind Cave National Park (South Dakota) – May 24



Celebration Sunday

Next Sunday in worship we'll be celebrating everyone's gifts that makes our church who we are!

- ✚ -The sermon will be the musical "Stone Soup"
- ✚ -Everyone is invited to bring ½ dozen of something for the potluck coffee hour. (ie, donut holes, clementines, boiled eggs, cheese & crackers, etc.)
- ✚ -This is also our last day of Sunday School for the school year.



In Our Prayers

New in our prayers:

- **Hospitalized:** Michael Becklund
- **Hospice:** Barb Spleiss
- **Death:** Sue Ammerman (Dean Ammerman's mother) on May 5.

Holding in prayer:

- **Home Hospice:** Bonnie Graham
- **Receiving treatment for cancer:** Scott Boras (*brother of Carrie Knopke*), , Judy Durfey, George Gallagher



Annual Meeting A Charge Conference for approval of our elected leaders for 2026-2027 will be held during our Church Council meeting on Tuesday, May 12, 2026 at 6:30 p.m. The meeting is open to everyone, and any member of the Church Council can vote.

PLANT SALE PICK-UP is this Wednesday, May 13 from 5:30-7:00 pm at church

We are looking for Scripture Readers

Children, Teens & Adults are encouraged & welcome to sign up!

Annette Meier will send the scripture to you on Wednesday - if you don't hear from her, or you sign up later than Wednesday, please text/call her (612) 597-1778 or e-mail at salmeier@hotmail.com

Here is the link to the sign-up tool:



THIS WEEK AT MINNEHAHA

Sunday May 10, 2026 Mother's Day

- 9:30a Worship with Organ (Sanctuary)
- 10:45a Adult Faith Formation (310)
- 10:45a Sunday School (Classrooms)
- 6p Rehearsal Mpls Choir Collective (Sanctuary)
- 7p SAA (306)

Monday May 11, 2026

- 6:30a Food Shelf Delivery (Fellowship Hall)
- 1:30p Al-Anon (306)
- 6p Den Meeting (Classrooms)
- 6:30p Finance (Zoom (1))
- 6:30p Troop Meeting (Fellowship Hall & Gym)

Tuesday May 12, 2026

- 9a Fun & Fitness Group (302/304)
- 10a Food Shelf (Fellowship Hall, Narthex)
- 4p Organ practice (Sanctuary)
- 6p Karate Group (Gym)
- 6:30p Church Council (Room 302/304 & Zoom 3)

Wednesday May 13, 2026

- 9:10a Men's Study of Scripture + Prophetic Consciousness (210)
- 5:30p Methodicals (Wesley Room & Sanctuary)
- 5:30p Plant sale pickup (Outside)
- 5:30p Wednesday Night Dinner (Fellowship Hall)
- 6p Wednesday Night Childcare (Gym, Nursery, Preschool rooms)
- 6:15p Chancel Choir (310)
- 6:15p Confirmation Class (302/304)
- 6:15p Spring Musical Dress Rehearsal (Sanctuary)

Thursday May 14, 2026

- 9a Fun & Fitness Group (302/304)
- 9:30a Minnehaha Playgroup (202/204)
- 6p Karate Group (Gym)
- 6:30p Peterson Grad Party (Fellowship Hall)
- 6:45p Climate Action (210 and Zoom)

Friday May 15, 2026

- 10a Al-Anon (306)
- 4p Organ practice (Sanctuary)
- 6:30p RCA (306)

Saturday May 16, 2026

- 9a M. Mazvydas Lithuanian Heritage School (Narthex, 206, 208, 302, 304, 306, 308, 310)
- 11a Fellowship Hall: Last day of Lith. Sch. (Fellowship Hall)
- 11a Karate Group (Gym)
- 2p Food Shelf Celebration (Fellowship Hall & Kitchen, Side Lawn)

Sunday May 17, 2026

- 9:30a Worship with Band (Sanctuary)
- 10:45a Adult Faith Formation (310)
- 10:45a Sunday School (Classrooms)
- 10:45a Young Adult Gathering (Berry Sweet Kitchen, 5406 S 34th Ave, Minneapolis, MN 55417, U)
- 11:30a Youth Choir Rehearsals (310)
- 3p Youth Group (offsite)
- 7p SAA (306)



CLASS 2026

We are looking for Graduates

Are you or someone in your family graduating from high school, college, or graduate school?

WE'LL BE RECOGNIZING OUR 2026 GRADUATES ON SUNDAY, MAY 31

Submit Graduate's Info. by May 21



MINNEHAHA

YOUTH GROUP SUNDAYS

4:00-5:30 PM

- May 3 - Walk to Dairy Queen
- May 10 - No Youth Group
- May 17 - End of Year Party!
Lock & Key Escape Rooms
Leave church by 3 pm; Return by 5 pm

RSVP by May 13

All 6th-12th graders welcome!

Worship moves outside May 24! Summer is coming! On Memorial Day weekend (May 24) we'll begin worshipping outside at 10:00. We do have chairs and blankets, and you are also welcome to bring your own if you'd prefer. We will stop offering childcare in the nursery – there is a playground right next to the worship space outside and children are welcome to play there after the children's message. We just ask that parents keep an eye on their children while they are there (it is not staffed).

THE CHURCH RUMMAGE SALE IS COMING!

FRIDAY, JUNE 12: 9AM – 4PM
SATURDAY, JUNE 13: 9AM – 4PM
SUNDAY, JUNE 14: 11AM – 1PM

Bag Sale On Sunday

HOUSEWARES & LINENS. TOYS. BOOKS. ELECTRONICS. AND MORE! (NO CLOTHES.)

MINNEHAHA UNITED METHODIST CHURCH
3701 EAST 50TH STREET, MPLS

All Church Rummage Sale coming June 12-14 and we need your rummage! You can drop it off on Sunday, May 31 or June 7 bringing it to the Fellowship Hall (no clothes, jewelry nor large furniture). We need you to help! Set-up (sorting, pricing, etc.) Wed. June 10 and Thurs. June 11 from 9:00-4:00 along with sales help. This is also the weekend of the NENA sales. Let Maureen Trepp (612-387-2520) know if you can help or with questions.



MinneHarvest

Our free food give-away once a month is a source of food relied upon by many, and it happens through volunteers who come each month. We gather outside on the 4th Saturday of each month; join us on May 23 for all or any portion of that time, dress appropriately for the weather, and bring a friend! You can volunteer anytime between 7:15 and 10:30 a.m. We start setting up around 7:00, serve the food starting around 8:00, and are usually done cleaning up by 10:30.

MINNEHARVEST
a food mission of minnehaha united methodist church

Olympic National Park

Washington

Diversity is the hallmark of Olympic National Park. The park protects 922,651 acres, encompassing three distinctly different ecosystems: rugged glacier-capped mountains, wild Pacific coast, and magnificent old-growth temperate rain forest.

From massive conifers over 20 stories tall, to minute clumps of pink Douglasia prying a life out of rocky peaks, the Olympic Peninsula and Olympic National Park boast an amazing diversity of plant life.

Over 1,450 types of vascular plants grow on the Peninsula, nearly the same number as the British Isles—an area 30 times larger. In addition, hundreds of species of non-vascular mosses, liverworts and hornworts also live here.

The park and surrounding Olympic Peninsula have snowy peaks that plunge to mist-shrouded coast. Misty temperate rain forest on the west side, lies only 34 miles from dry oak savanna in the rain shadow northeast of the mountains. These quick changes in elevation and precipitation mean a lot of different habitats are crowded into the area.

The three ecosystems contain a unique array of habitats and life forms resulting from thousands of years of geographic isolation and extreme gradients of elevation, temperature, and precipitation.

There have been people on the Olympic Peninsula for more than 13,500 years. Many tribes used what is now Olympic National Park as their home, hunting grounds, and transportation routes prior to and after European American arrival.

Long before Euro-Americans arrived to the peninsula, Native Americans inhabited the area, living mostly along coasts and river mouths. Three treaties extinguished their land titles, and the vast lands were opened to settlement and development by Euro-Americans. The Olympic Peninsula was America's last frontier of westward expansion in the contiguous 48 states.

Promises of free land and agricultural opportunities brought Euro-Americans to the Olympic Peninsula. By the 1850s, settlement of coastal areas and lowlands had begun and four Indian reservations were established at the mouths of coastal rivers - the Makah, Quillayute, Hoh, and Quinault.

Though Native Americans already had a deep knowledge and connection with the land, it was not until the closing years of the 19th century that a documented Euro-American exploration penetrated the Olympic Mountains. They traveled by way of the major river channels on both the east and west sides of the peninsula.

Life was hard and the establishment of the Olympic Forest Reserve persuaded a great deal of the homesteaders to move elsewhere. By 1919 few traces of Euro-American settlement history within the present-day Olympic National Park remained.

Since the 1880s, the Olympic Peninsula's spectacular mountains, rain forest, and unique wildlife have captured the attention of visitors, park advocates, and naturalists. By 1890 Naturalist John Muir, Washington Congressman James Wickersham, and Lieutenant Joseph O'Neil, who led the first well-documented exploration of the peninsula's interior, each respectively proposed creation of a national park on the Olympic Peninsula.

In 1897 the area received its first national designation, as Olympic Forest Reserve, by President Grover Cleveland in response to concern about the area's disappearing forests. Eight years later, in 1909, President Teddy Roosevelt designated a part of the reserve as Mount Olympus National Monument to protect the habitat of Roosevelt Elk, whose population was in steep decline.

In 1937 President Franklin Roosevelt visited the Olympic Peninsula and added his support to establishment of a national park. The following year he signed the act designating Olympic National Park. An additional area of Pacific coast was added in 1953.

“Thank you so much for your generosity at the auction! We raised a record amount for the church, and 100% of all donations go directly to our operating budget. Additionally, there are still 11 Magnificent Minnehaha Meetups available, please scan the below link for details and to sign up today!”

Magnificent Minnehaha Meet-Ups



- ★ **Sip & Dream** / Host Jennifer Sly / Mon, May 11th / 6-7:30pm / \$15 / 3 Spots Open
- ★ **Leisurely Bike Ride** / Host Paul Minehart / Sat, Jun 5th / 8am-12pm / \$20 / 9 Spots Open
- ★ **Amazing Race Bike Adventure** / Host Cory Dallas / Sun, Jun 7th / 12-2pm / \$25/Team / 9 Spots Open
- ★ **Forest Therapy Walk** / Host Becky Sechrist / Sat, Jul 11th / 9am-12pm / \$20 / 10 Spots Open
- ★ **Daylily Garden Tour** / Host Ralph Butkowski / Sun, Jul 19th / 2-4pm / \$15 / 11 Spots Open
- ★ **Spanish Tapas & Wine** / Host Sue & Peter Johnson / Sat, Jul 19th / 3:30pm / \$25 / 5 Spots Open
- ★ **Beatles Sing-a-Long** / Host Julia Cook / Sun, Sep 13th / 3-5pm / \$20 Adult - \$15 Kid - \$50 Family Max
- ★ **Indian Food Night** / Host Joe Schlosser / Fri, Sep 25th / TBA / \$20 / 6 Spots Open

Sign-Up & Pay through Omella

Omella is available to organizations such as MUMC at no cost due to offering a tip option.

You do **NOT** have to pay a tip – that money goes to Omella, not to MUMC.

To select No Tip, choose 'Other' & then enter 0.



Minneapolis Choir Collective is proud to present our spring concert series: Homeland is a Process Delayed, an evening of choral music featuring Melissa Dunphy's N-400 Erasure Songs, Damien Geter's Cantata for a More Hopeful Tomorrow, Tara Mack's Virtues of Resistance: Community, as well as two new works: Composing Fellow Riley Skinner's Clouds and Conducting Fellow Klo Garoute's Lost. Klo Garoute will be conducting her own premiere piece, as well as N-400 Erasure Songs.


The concert will support the Minnesota Immigration Movement and the continued grassroots efforts to support immigrants impacted by ICE and CBP activity. May 15 at Mount Olive Lutheran Church, Minneapolis or May 16 at White Bear Unitarian Universalist Church, Mahtomedi. 7:00pm.


South Wall Project: Raising \$35,000





This photo of the south wall of the church shows the area where water has entered the building walls and is affecting the rooms on the second and third floors.

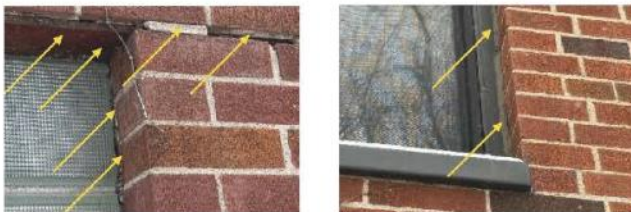


 **BAD News:** Water is getting behind the brickwork on our south wall around the windows, causing warping and humidity in room 206.

 **GOOD News:** We now know the cause of the problem so we can fix it. And there's no more asbestos in room 206.

 **BAD News:** Water will continue to build up in the south wall, even if we fix the floor in room 206.

 **GOOD News:** Fixing this problem is a long-term solution. We can do it!



Fixing the masonry on the south wall isn't just a repair, it fixes the problem. We stop water from coming in, and we give any future water leaks a way out. Plus, we're also stopping pests and temperature leaks.

The cost to repair the south wall and the floor of room 206 is \$65,000.

You can donate to the "South Wall Project" anywhere Minnehaha UMC receives funds: via cash, check, QR code, or PayPal. If you do give, please make a note or write in the memo line of your check "South Wall Project" so we know where to direct your donation. Thank you!

South Wall Building Project



The Trustees and Finance committees have agreed to use our Congregational Trust Fund (CTF) – which was established to help pay for building projects like this one – to match donations from church members until we reach our goal. We need to raise about \$35,000 to cover the rest of the cost. We hope to have this project completed by summer.

